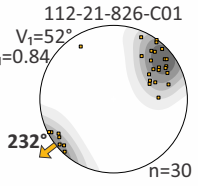
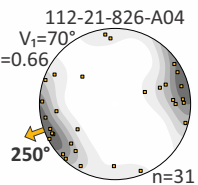
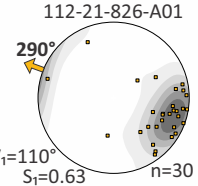


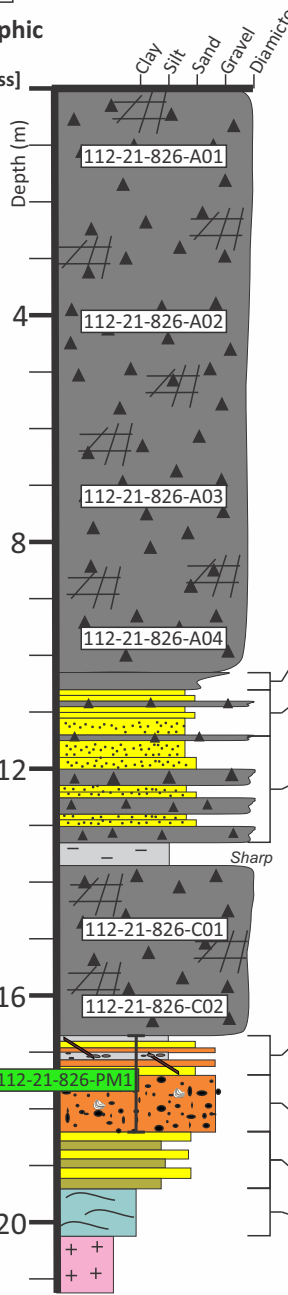
Section 112-21-826  
Churchill River  
Elevation (top): 192 m asl  
UTM Zone 15, NAD83: 339111E, 6363821N

Ice-flow data  
and  
interpretation



Sediment  
interpretation

Stratigraphic  
Bed  
[thickness]



Description

2 m covered by excessive colluvium; description starts below this

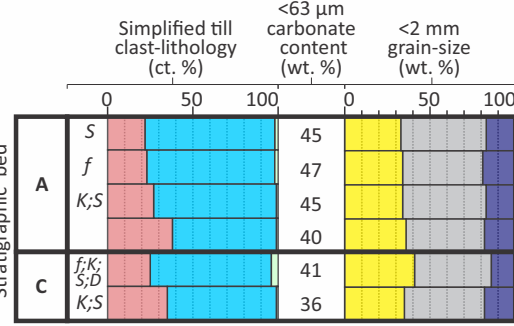
Dark greyish brown (Munsell colour 2.5Y 4/2) diamicton; sandy-silt matrix; compact with a blocky appearance; 15% clasts

10.3–10.6: sand and diamicton; chaotic mixture; no obvious bedding planes; striated and faceted clasts in sediment  
10.6–11.4: fine- to medium sand and diamicton; bedded; distinct and obvious bedding; sand beds are thicker and contain internal horizontal to subhorizontal lamination within each bed  
11.4–13.3: bedded diamicton and sand; bedded; diamicton beds are thicker than sand beds; abraded shell fragments in sand  
13.3–13.7: silt; grey;

Dark greyish brown (Munsell colour 2.5Y 4/2) diamicton; sandy-silt matrix; very compact with a blocky appearance; 15% clasts

16.7–17.4: clay, silt, sand and gravel; varies along contact; very poorly sorted; angular granule to small-cobble sized clasts; poorly defined bedding, but there is structure to the sediment; wood and rounded peat fragments; oxidized colour throughout  
17.4–18.4: sandy gravel; poorly sorted; silver-coloured sand streaks within sediment; abraded shell fragments  
18.4–19.4: sandy silt interbedded with fine sand  
19.4–20.1+: clay minerals with sand-sized quartz grains; grey, silver and orange colour

Field comment: granitoid bedrock outcrops along river bank and is visible outcropping in the river from the section. There is also a high proportion of gossanous clasts along beach near base of section (see photos)



Granitoid  
Hudson Bay Basin  
Undifferentiated greenstone and greywacke  
Sand  
Silt  
Clay  
K: Trace (<3%) Kenogami Fm.  
S: Trace (<3%) Shale  
D: Dubawnt erratic counted  
f: Shell fragment counted

